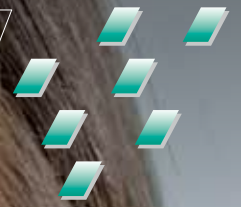


Natural beauty restored
in one appointment



initial[™]
LiSi Block

Lithium Disilicate
CAD/CAM Block for
chairside solutions



Since 1921
100 years of Quality in Dental

Natural beauty restored in one appointment

Initial LiSi Block: new lithium disilicate block for one appointment dentistry

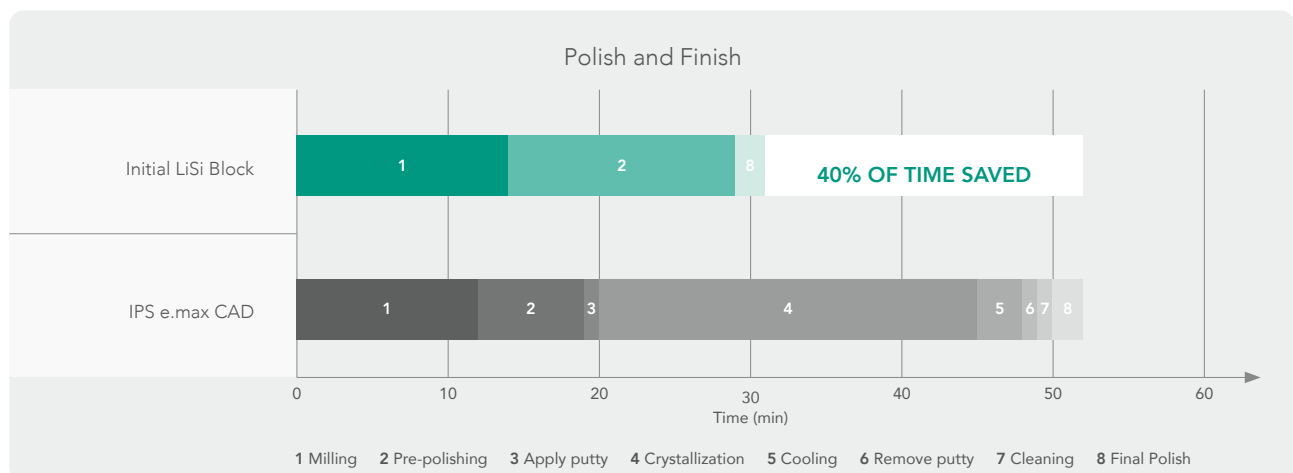
Initial LiSi Block is a **fully crystallized lithium disilicate block** that delivers optimal physical properties without firing. This unique block features GC's proprietary **HDM (High Density Micronization) technology for CAD/CAM dentistry** to deliver high wear resistance, smooth margins and aesthetic final results. This makes it an ideal, time saving solution for single visit chairside treatments.



- Save time, as no firing is required
- Fully crystallized lithium disilicate
- Durable aesthetic & accurate margins
- Natural opalescence

Just Mill, Polish and Place

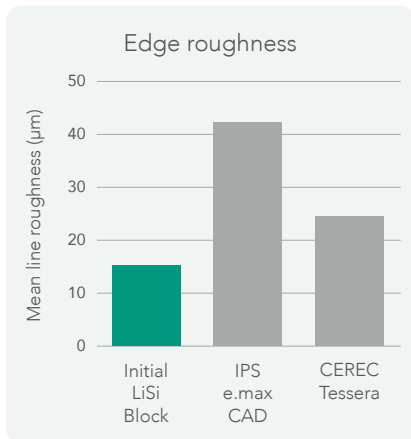
Initial LiSi Block can dramatically reduce process time: no need to fire, glaze, characterize and cool. This saves up to **40% in the time*** required to create your restorations, also reducing the chair time for you and your patient. You just need to mill, polish and place!



Source: GC R&D, Japan, Data on file

*Under testing conditions based on IFU.

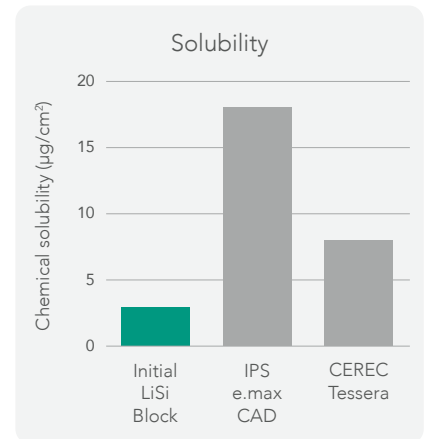
Durable aesthetics and smooth margins



Source: GC R&D, Japan, Data on file



Source: GC R&D, Japan, Data on file

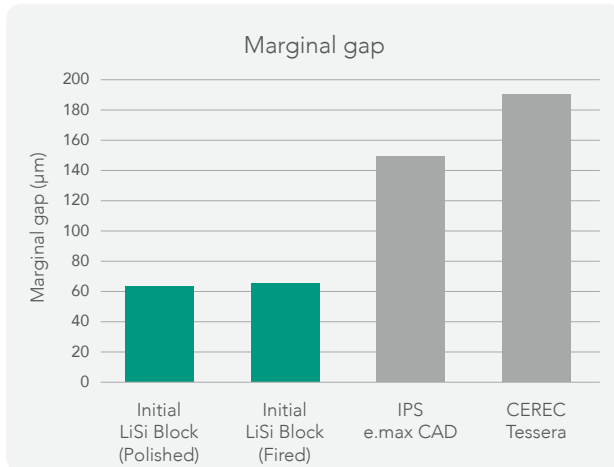


Source: GC R&D, Japan, Data on file

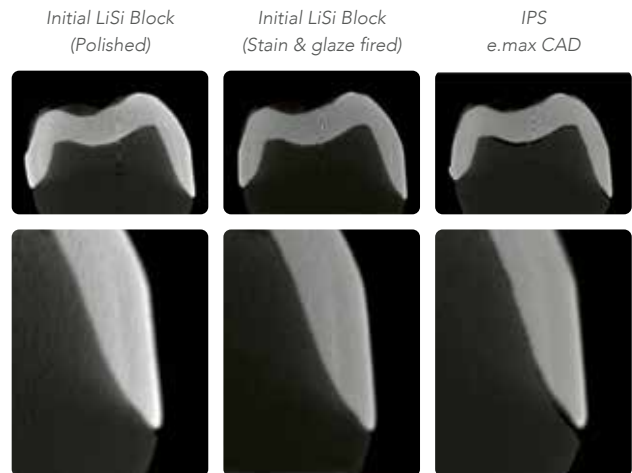
- Optimized acid and wear resistance to help preserve the aesthetics of your restorations over time.
- Excellent edge stability for smooth margins.

More accurate margins

Being fully crystallized before milling, Initial LiSi Block can be milled with **smooth and accurate margins directly**. Alternatively, it can be fired after staining and maintain great marginal accuracy.



Source: GC R&D, Japan, Data on file



Initial LiSi Block restoration under direct and indirect light.



Courtesy of Dr. Javier Tapia Guadix, Spain

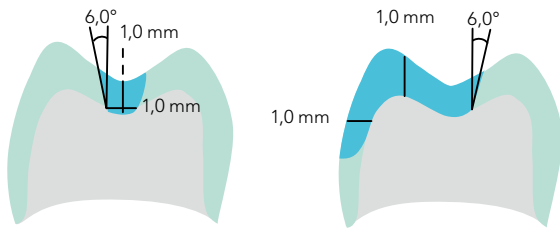
Natural opalescence

Initial LiSi Block is available in high translucency (HT) and low translucency (LT) and offers a natural opalescence in any light.

Choose your preferred finishing procedure

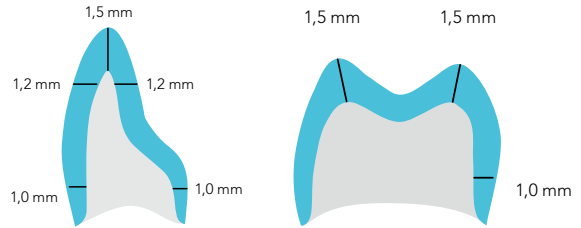
Superior gloss can be obtained in few minutes by polishing only, and the restoration is then ready for luting. For sophisticated aesthetic cases, remarkable results can be achieved with GC Initial Lustre Pastes ONE and Initial Spectrum Stains.

Preparation guidelines



Inlays / Onlays

- Cavity wall angle: 6° with long axis
- Shoulder preparation



Full crowns

- Wall angle: 6~10° taper
- Deep chamfer or round chamfer preparation

Cement recommendation

Adhesive luting is recommended for Initial LiSi Block. Both G-CEM ONE and G-CEM LinkForce from GC can be used for any type of indications using Initial LiSi Block.



Function meets aesthetics

«I'm totally excited about the natural opalescence and color matching of the HT version of Initial LiSi Block.»

MDT Christian Hannker, Germany



«I love the opalescence of Initial LiSi Block and as a consequence thereof the color stability and perfect matching.»

Dr. Christian Lampson, Germany



Courtesy of MDT Christian Hannker & Dr. Christian Lampson, Germany



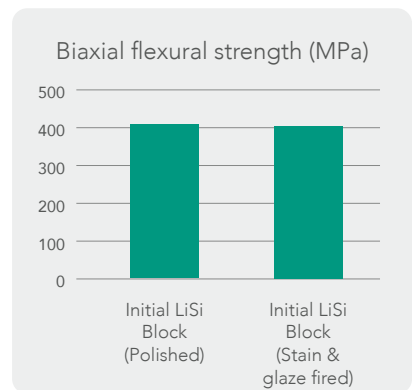
Courtesy of MDT Marco Muttone, Dr. Alessandro Iorio, Italy

HDM technology for CAD/CAM dentistry



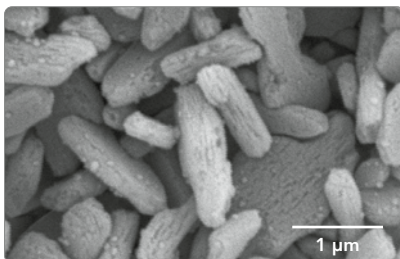
In 2016, with Initial LiSi Press, GC introduced HDM (High Density Micro-nization) technology, which uses equally dispersed lithium disilicate micro-crystals to fill the entire glass matrix rather than using traditional larger size crystals. The clinical effectiveness of this technology has been proven after 5 years of clinical service¹⁾.

To bring fast solutions for one appointment dentistry, GC has further developed HDM technology for CAD/CAM dentistry by optimizing the crystal size and glass matrix stiffness. Thanks to this new technology, good machinability, marginal integrity, polishability, and wear resistance are achieved at the same time. The result is a strong and easy-to-mill block that offers the same strength with or without firing.



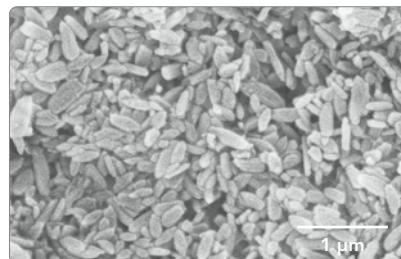
Source: GC R&D, Japan, Data on file

Conventional lithium disilicate (IPS e.max CAD)



Source: GC R&D, Japan, Data on file

HDM technology for CAD/CAM (Initial LiSi Block)



Improved glass matrix stiffness for high mechanical strength

Smaller crystal for easy milling and high wear resistance

Workflow

Courtesy of Prof. Matteo Basso, Italy



Prepare



Scan



Design



Mill



Polish or characterize



Condition

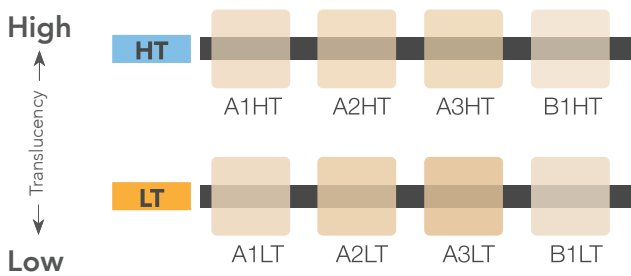


Cement



Final result

Ordering information



Initial LiSi Block CEREC mandrel, size 14

Ref.	Shade
012919	A1 HT
012920	A2 HT
012921	A3 HT
012922	B1 HT
012923	A1 LT
012924	A2 LT
012925	A3 LT
012926	B1 LT

1) Cagidiaco EF, Sorrentino R, Pontoriero D, Ferrari M. 2020. A randomized controlled clinical trial on two types of lithium disilicate partial crowns. Am J Dent. 33(6):291-295.

IPS e.max CAD and CEREC Tessera are not trademarks of GC.
G-CEM LinkForce™, G-CEM ONE™, Initial™ LiSi Press, Initial™ IQ Lustre Pastes ONE and Initial™ Spectrum Stains are trademarks of GC.

Related products



G-Multi PRIMER
Universal Primer



G-CEM ONE
Self-adhesive
resin cement



Initial IQ
Lustre Pastes ONE
3-dimensional
paintable ceramic

GC EUROPE N.V.

Head Office
Researchpark,
Haasrode-Leuven 1240
Interleuvenlaan 33, B-3001 Leuven
Tel. +32.16.74.10.00
Fax.+32.16.40.48.32
info.gce@gc.dental
<http://europe.gc.dental>

GC UNITED KINGDOM Ltd.

Coopers Court Newport Pagnell
Buckinghamshire
MK16 8JS
United Kingdom
Tel. +44.1908.218.999
Fax.+44.1908.218.900
info.uk@gc.dental
<http://europe.gc.dental/en-GB>

