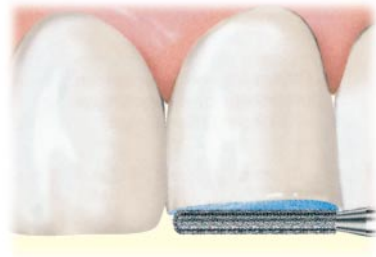


MAGIC SET 4

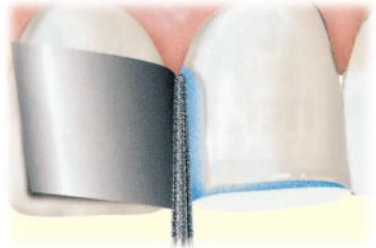
Präparation von Zähnen zur Versorgung mit Voll- und Metall-Keramikkronen
Preparation of teeth for full and metal-ceramic crowns

Präparationsform: Abgerundete Stufe • Frontzähne / *Preparation shape: Rounded shoulder • Anterior teeth*



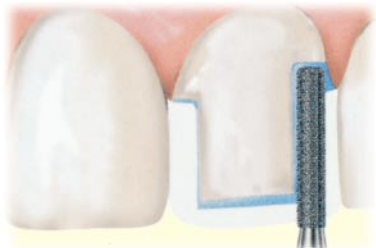
Abtragen der Schneidekante
Incisal reduction

806 314 157/158 524 010-014
 (836KR - 010/012, 837KR - 012/014)



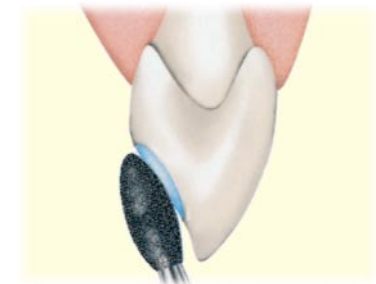
Präparation in Approximalbereich
Preparation of proximal area

806 314 199 524 012
 (850 - 012)



Umfang- und Stufenpräparation
Circumferential and shoulder preparation

806 314 157/158 524 010-014
 (836KR - 010/012, 837KR - 012/014)



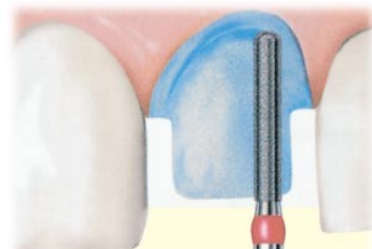
Präparation palatinaler und linguale Flächen
Preparation of palatal and lingual areas

806 314 263 524 025
 (369 - 025)



Abrunden der Kanten
Rounding of edges

806 314 263 524 025
 (369 - 025)



Finieren
Finishing

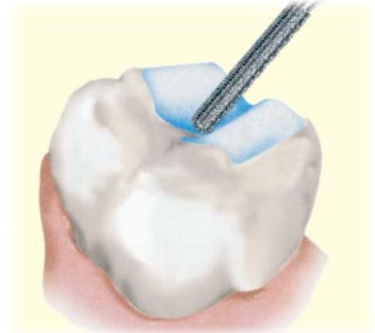
806 314 157/158 514 010-014
 (836KR - 010/012 F, 837KR - 012/014 F)

MAGIC SET 4

Präparation von Zähnen zur Versorgung mit Voll- und Metall-Keramikkronen
Preparation of teeth for full and metal-ceramic crowns

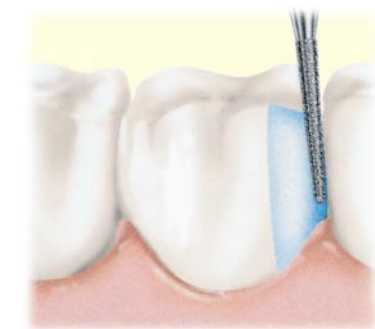
Präparationsform: Abgerundete Stufe • Seitenzähne / *Preparation shape: Rounded shoulder • Premolars/molars*

Abtragen der Okklusalfäche
Reduction of the occlusal surface



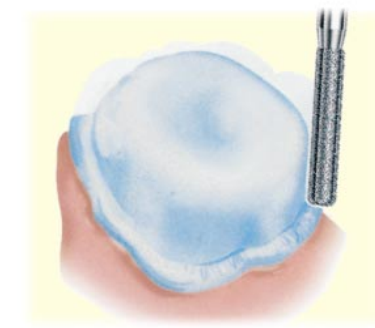
806 314 157/158 524 012/014
 (836KR - 012, 837KR - 012/014)

Präparation im Approximalbereich
Preparation of proximal area



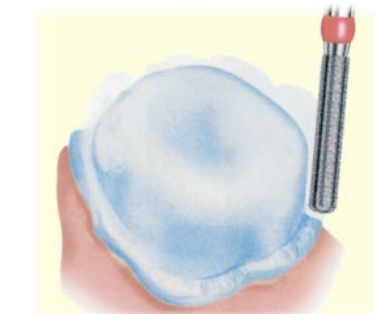
806 314 199 524 012
 (850 - 012)

Umfang- und Stufenpräparation
Circumferential and shoulder



806 314 157/158 524 010 - 014
 (836KR - 010/012, 837KR - 012/014)

Finieren
Finishing



806 314 157/158 514 010 - 014
 (836KR - 010/012 F, 837KR - 012/014 F)

Bestellnummer 40004SO
 Order Nr. 40004SO

