

## Purevac® HVE System with Mirror Tips and Hose Adapter



### High Volume Evacuation + Mirror in a Single Instrument

Two instruments in one hand

For more information, visit [dentsplysirona.com](https://dentsplysirona.com)

1. Al Maghlouth A, Al Yousef Y, Al Bagieh N. Qualitative and Quantitative Analysis of Bacterial Aerosols. J Contemp Dent Pract 2004 November;(5)4:091-100.
2. Milejczak CB. Optimum Travel Distance of Dental Aerosols in the Dental Hygiene Practice. J Dent Hyg. 2005 October;81(4):20-21
3. Christensen, R., PhD. (2006, November 1). Aerosols. Retrieved January 23, 2018, from <http://www.dentistryiq.com/articles/wdj/print/volume-4/issue-10/you-and-your-practice/aerosols.html>
4. Jacks MJ: A laboratory comparison of evacuation devices on aerosol reduction. J Dent Hig 2002, 76, 202-206.

© 2018 Dentsply Sirona Preventive  
INF05-1018-1 Rev. 2 (1118)



# Providing visibility and suction all in one hand

The new Purevac HVE System enables a one-handed approach to evacuating fluid and debris while facilitating retraction, visibility, and illumination during dental procedures.



## Purevac® HVE System with Mirror Tips and Hose Adapter

### Increases Efficiency

According to clinicians in a user study.

### Better Visibility

Fog-free mirror with continuous suction of fluids and debris.

### Greater Fluid Reduction

135% more than a low-volume saliva ejector.

### Easier Maneuverability

69% lighter and 130% more flexible than a standard HVE hose.

5 foot, kink-resistant hose with 360° swivel connection for HVE Mirror Tip.

### Reduced Noise

14% less than a standard HVE tip.

5% less than a low-volume saliva ejector.

### A solution for any size HVE valve.

The Purevac HVE System provides many ergonomic benefits and converts a standard 11mm HVE valve to a 16mm valve to securely fit the mirror tip.



11 mm

16 mm

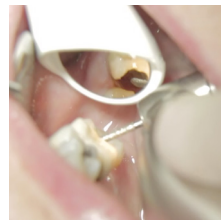


Hose adapter fits directly into a 11mm HVE valve.

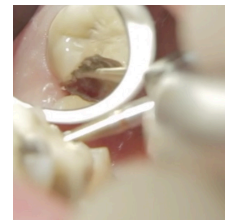


## Promoting better, safer, faster dental procedures

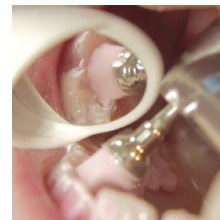
One innovative system that handles multiple procedures.



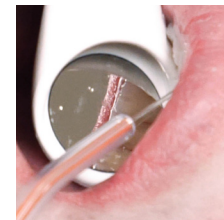
Wet Drilling



Dry Drilling



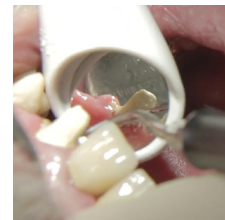
Rubber Cup Polishing



Air/Water Syringe



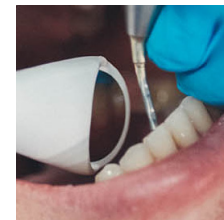
Sealants



Ultrasonic Scaling



Irrigation



Air Polishing

## Better visibility in two mirror options.



### ● FS Rhodium

With a rhodium coating, a precious metal which is resistant to chemicals and acids.



### ● Ultra FS

Offers exceptionally bright image quality with maximum reflection for color accuracy.



Fog-free dental mirror provides indirect vision and illumination to the work site

Rounded and smooth edges designed for retraction of the oral mucosa

Autoclavable up to 100 cycles

Ports provide continuous airflow, reducing mucosal aspiration and risk of back-flow

Fits directly into a 16mm HVE valve

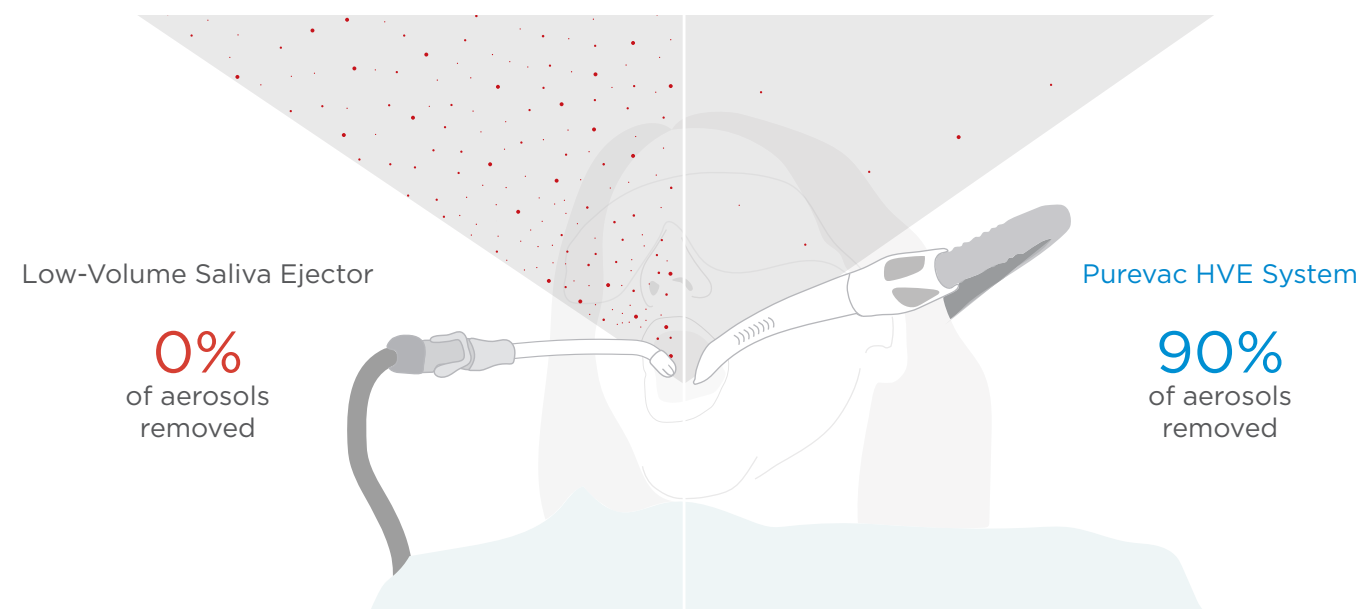


# Creating an environment with fewer potentially harmful aerosols

Procedures that generate aerosols and splatter can present safety risks for all patients and dental professionals.

- During dental treatments, bacterial aerosols increase **5x<sup>1</sup>**
- Aerosols can spread up to **8 FEET<sup>2</sup>**
- The most common reason for dental professionals to miss work is **RESPIRATORY INFECTION<sup>3</sup>**

In a research study, **HVE removed 90% more aerosols** during ultrasonic scaling compared to a low-volume saliva ejector.<sup>4</sup>



## Ordering Information

P/N	Description	Price
CD1011V	Purevac® HVE Mirror Tips 1 FS Rhodium and 1 Ultra FS	
CD1033	Purevac® HVE Mirror Tips 3 FS Rhodium and 3 Ultra FS	
CD2006	Purevac® HVE Mirror Tips 6 FS Rhodium	
CD3006	Purevac® HVE Mirror Tips 6 Ultra FS	
CD2012	Purevac® HVE Mirror Tips 12 FS Rhodium	
CD3012	Purevac® HVE Mirror Tips 12 Ultra FS	
CD2024	Purevac® HVE Mirror Tips 24 FS Rhodium	
CD3024	Purevac® HVE Mirror Tips 24 Ultra FS	
11000	Purevac® HVE System with Mirror Tips and Hose Adapter Please note: Hose Adapter is for 11mm valves only.	
CD8011	<b>Coming Soon:</b> 11mm HVE Adapter Adaptes 11mm HVE Valve to fit a 16mm tip.	