

Adaptive

Rise With the One.

Just ONE shaping file for
multiple canal morphologies.

A new Gen.



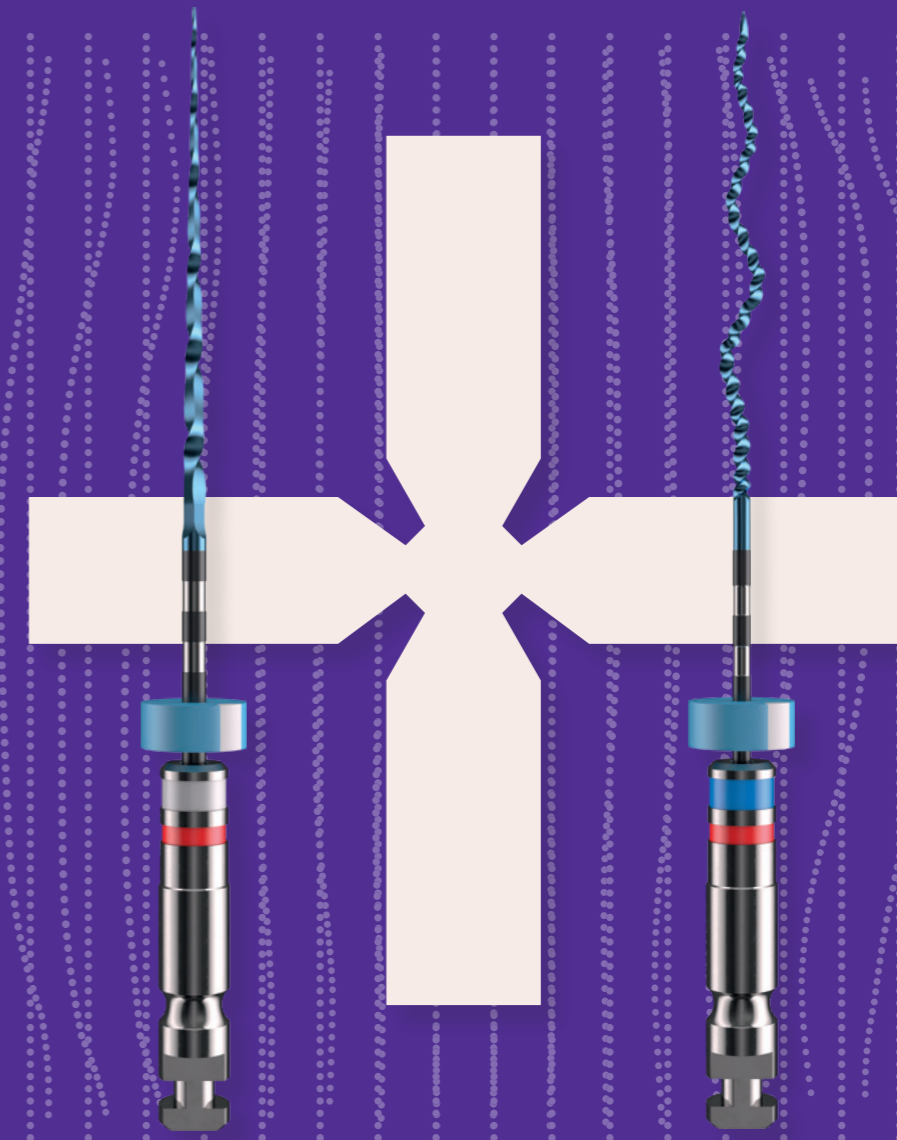
XP-endo® Rise is the next generation of our adaptive one-shaper line.

Simple and more predictable, XP-endo® Rise gives you safety and control.

Discover a new design created for shorter procedure times and agility.

One branded glidepath
+ One shaper
= One straightforward procedure

One Glider



One Shaper

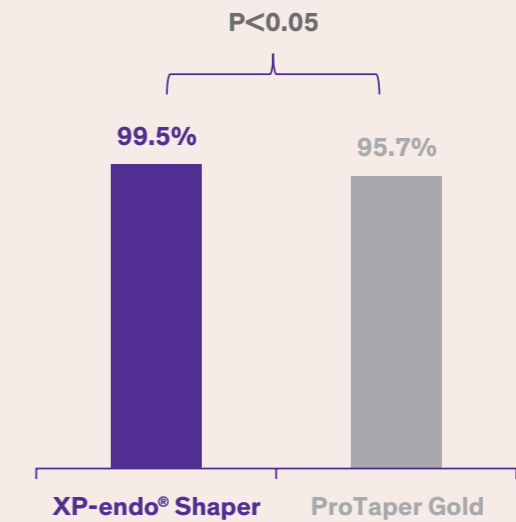
XP-endo®
Rise Glider

XP-endo®
Rise Shaper

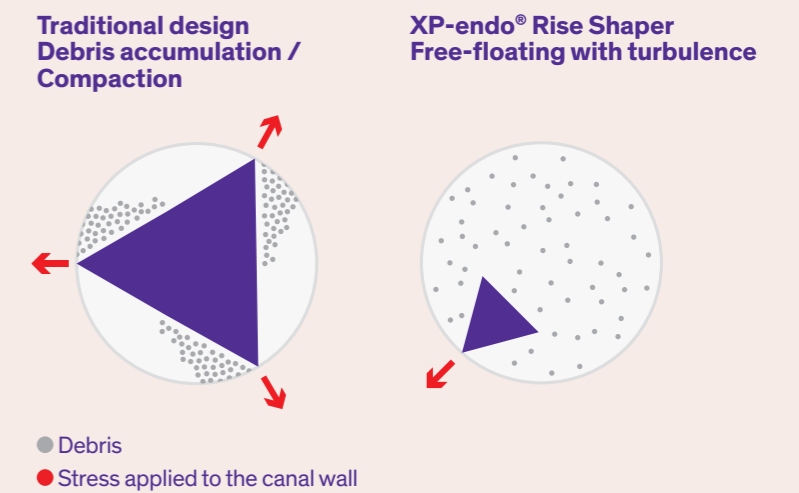
A totally unique system that offers predictability, an excellent ability to adapt to the canal and multiple use in primary treatment. XP-endo® Rise superior resistance merged with the added advantage of shorter procedure times.

Simple ONE shaping file reduces treatment time¹

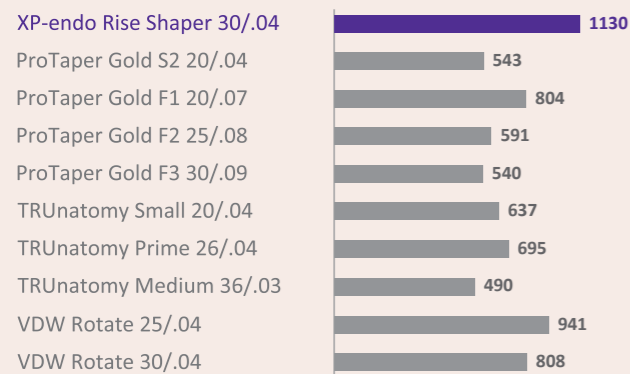
High bacteria reduction - up to 99.5%¹



High debris removal in C-shaped canals (up to 98.9%)²

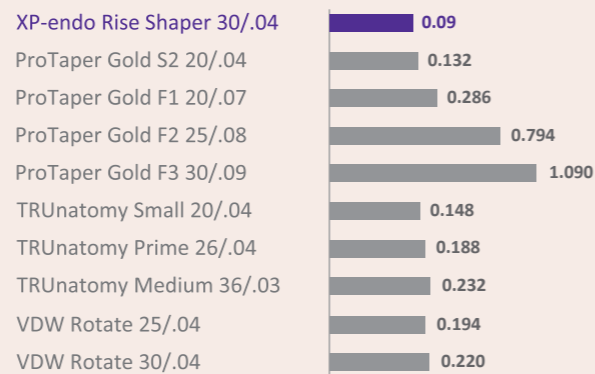


Superior resistance to cyclic fatigue*
Mean number of cycles to fracture



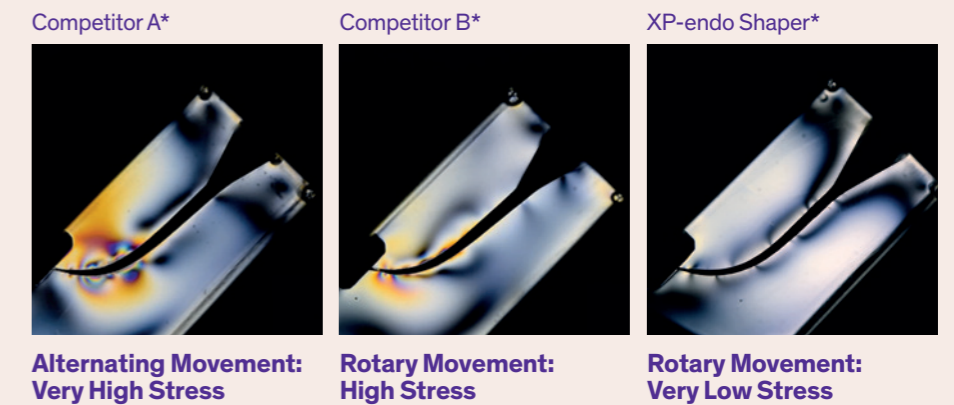
HIGHER IS BETTER

Superior flexibility*
Mean torque [Ncm] required to bend at 45° angle



LOWER IS BETTER

Preserves root anatomy



*Internal testing. Data on file.

¹ Siddique R, Nivedhitha MS, Ranjan M, Jacob B, Solete P. Comparison of antibacterial effectiveness of three rotary file system with different geometry in infected root canals before and after instrumentation-a double-blinded randomized controlled clinical trial. *BDJ Open*. 2020;6:8. Published 2020 Jun 8. doi:10.1038/s41405-020-0035-7. <http://creativecommons.org/licenses/by/4.0/>. No changes made.

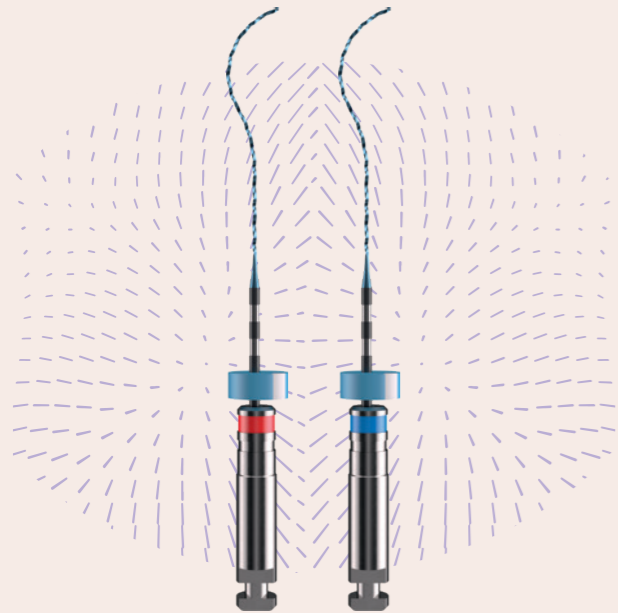
² Zhao Y, Fan W, Xu T, Tay FR, Gutmann JL, Fan B. Evaluation of several instrumentation techniques and irrigation methods on the percentage of untouched canal wall and accumulated dentine debris in C-shaped canals. *Int Endod J*. 2019;52(9):1354-1365. doi:10.1111/iej.13119

*Internal testing. Data on file.

¹ Azim AA, Piasecki L, da Silva Neto UX, Cruz ATG, Azim KA. XP Shaper, A Novel Adaptive Core Rotary Instrument: Micro-computed Tomographic Analysis of Its Shaping Abilities. *J Endod*. 2017;43(9):1532-1538. doi:10.1016/j.joen.2017.04.022

Finisher & Finisher R

The universal mechanical cleaning solutions

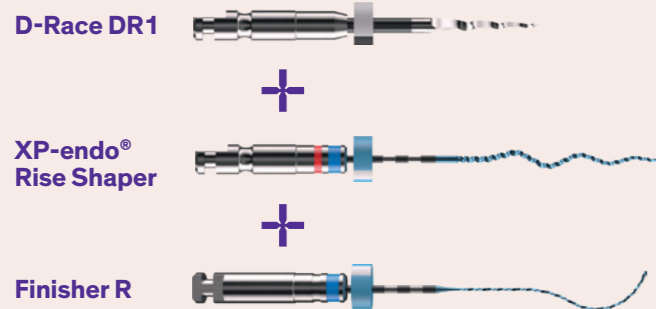


Up to 98%
bacterial reduction
in the main canal¹

Superior
resistance
to cyclic fatigue vs. rotary files*

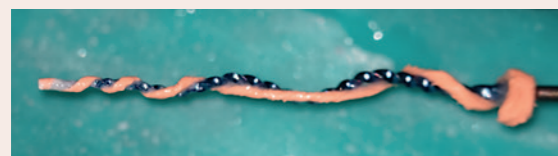
XP-endo® Rise Retreatment

Simplify your retreatment protocol



2x
faster
XP-endo® Shaper vs. a
conventional competitor for
performing retreatment
procedures²

XP-endo® Shaper with gutta percha entangled



© Dr. Klaus Lauterbach (Germany), All rights reserved

2x more debris
removal
Finisher R vs. PUI³

Product References

SEQUENCES

XP-endo® Rise Sequence (3x2 pcs per blister)

15/.04	21mm	S1.XB0.00.SAI.FK
30/.04	25mm	S1.XB0.00.SAG.FK
30/.04	31mm	S1.XB0.00.SAJ.FK

XP-endo® Rise Retreatment (1x3pcs per blister)

30/.10 (15mm)	21mm	S1.XB0.00.SAK.FK
30/.04	25mm	S1.XB0.00.SAH.FK
30/.00	31mm	S1.XB0.00.SAL.FK

REFILL

XP-endo® Rise Glider

15/.04	6x	21mm	S1.7B0.00.0HN.FK
	6x	25mm	S1.7B0.00.0HO.FK
	6x	31mm	S1.7B0.00.0HP.FK

XP-endo® Rise Shaper

30/.04	6x	21mm	S1.XB0.00.0AR.FK
	6x	25mm	S1.XB0.00.0AS.FK
	6x	31mm	S1.XB0.00.0AT.FK

XP-endo® Rise Shaper

30/.04	3x	21mm	S1.XB0.00.0AU.FK
	3x	25mm	S1.XB0.00.0AV.FK
	3x	31mm	S1.XB0.00.0AW.FK

Finisher

25/.00	3x	21mm	S1.XB0.00.0AX.FK
	3x	25mm	S1.XB0.00.0AY.FK
	3x	31mm	S1.XB0.00.0AZ.FK

Finisher R

30/.00	3x	21mm	S1.XB0.00.0BA.FK
	3x	25mm	S1.XB0.00.0BB.FK
	3x	31mm	S1.XB0.00.0BC.FK

PAPER POINTS

Box of 200 Paper Points

30/.04	08.610.04.030.BC
35/.04	08.610.04.035.BC
40/.04	08.610.04.040.BC
50/.04	08.610.04.050.BC

GUTTA PERCHA

Box of 60 Gutta Percha

30/.04	08.600.04.030.RE
35/.04	08.600.04.035.RE
40/.04	08.600.04.040.RE
50/.04	08.600.04.050.RE

TOTALFILL® BC POINTS™

Box of 60 BC Points

30/.04	08.650.04.030.RE
35/.04	08.650.04.035.RE
40/.04	08.650.04.040.RE
50/.04	08.650.04.050.RE

TOTALFILL® BC SEALER™

Syringe 2g + 15 TotalFill BC Tips



08.650.00.007.XX

TOTALFILL® BC POINTS™ HIFLOW

Box of 60 BC Points HiFlow

30/.04	08.650.04.030.HF
35/.04	08.650.04.035.HF
40/.04	08.650.04.040.HF
50/.04	08.650.04.050.HF

TOTALFILL® BC SEALER™ HIFLOW

Syringe 1.5g + 15 TotalFill BC Tips



08.650.00.008.XX

*Internal testing. Data on file.

¹ Azim AA, Aksel H, Zhuang T, Mashtare T, Babu JP, Huang GT. Efficacy of 4 Irrigation Protocols in Killing Bacteria Colonized in Dental Tubules Examined by a Novel Confocal Laser Scanning Microscope Analysis. J Endod. 2016;42(6):928-934. doi:10.1016/j.joen.2016.03.009

² AlOmari T, Mustafa R, Al-Fodeh R, El-Farraj H, Khaled W, Jamlah A. Debris Extrusion Using Reciproc Blue and XP Endo Shaper Systems in Root Canal Retreatment. Int J Dent. 2021;2021:6697587. Published 2021 Mar 24. doi:10.1155/2021/6697587

³ De-Deus G, Belladonna FG, Zuolo AS, et al. XP-endo Finisher R instrument optimizes the removal of root filling remnants in oval-shaped canals. Int Endod J. 2019;52(6):899907. doi:10.1111/iej.13077



Empower Endo

For 90 years, we have striven to deliver Swiss quality, precision and peace of mind to endo specialists. Our unique approach is driven by the quest to provide the best dental care and our conviction that the search for perfection is never over. Like you, we seek to advance the frontiers of the possible by evolving through research, refinement and innovation. Ready to change the game?