

#whdentalwerk



video.wh.com

Now at
your dealer
or wh.com



Assistina Twin with Quick Connect by W&H

The adaptor system

Quick and simple adaptor changes optimize your processes and increase efficiency in practice.

You decide which adaptors you actually need.
Equip your Assistina Twin according to your needs
and only use the right adaptors suitable for you in
the two chambers.



assistina^{TWIN}



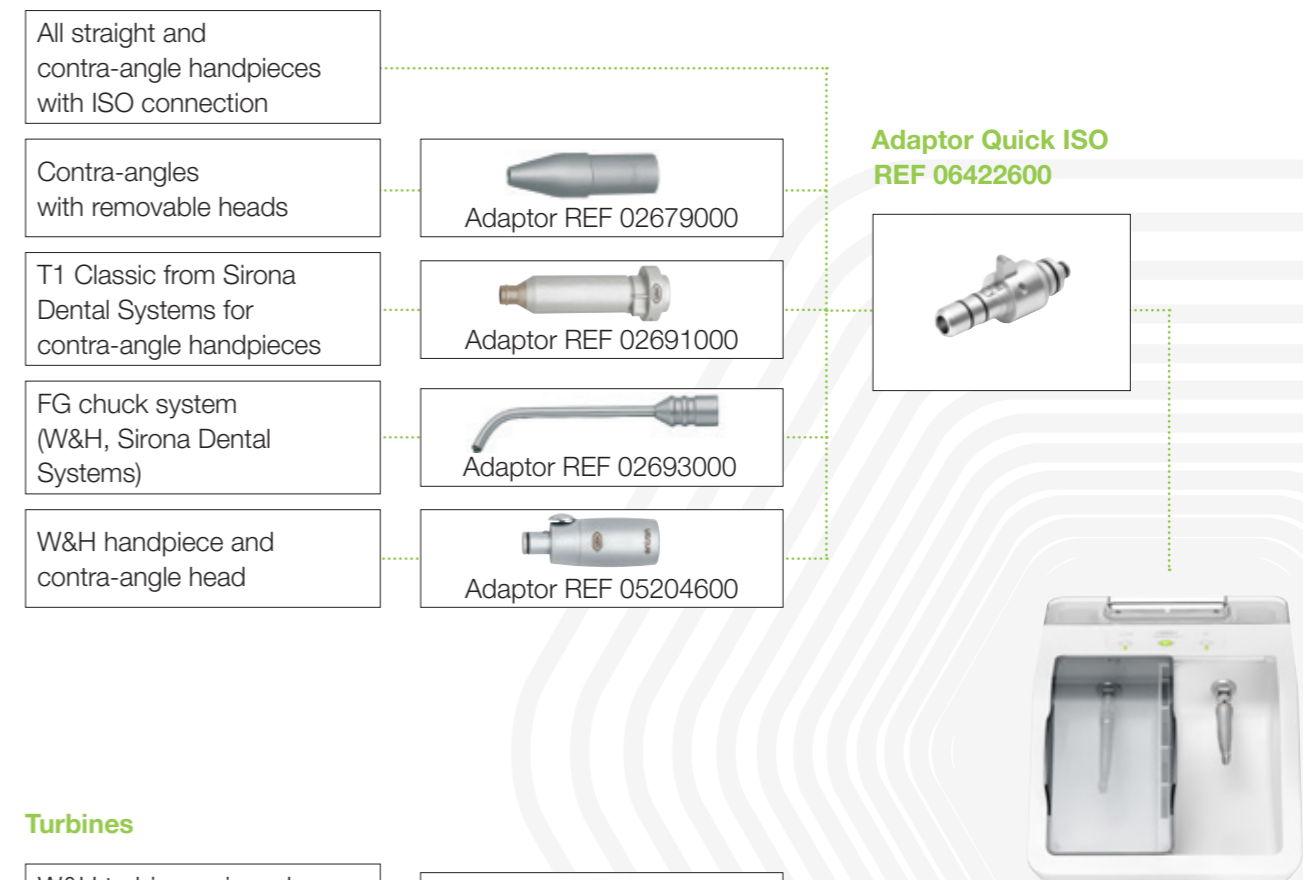


System overview adaptor

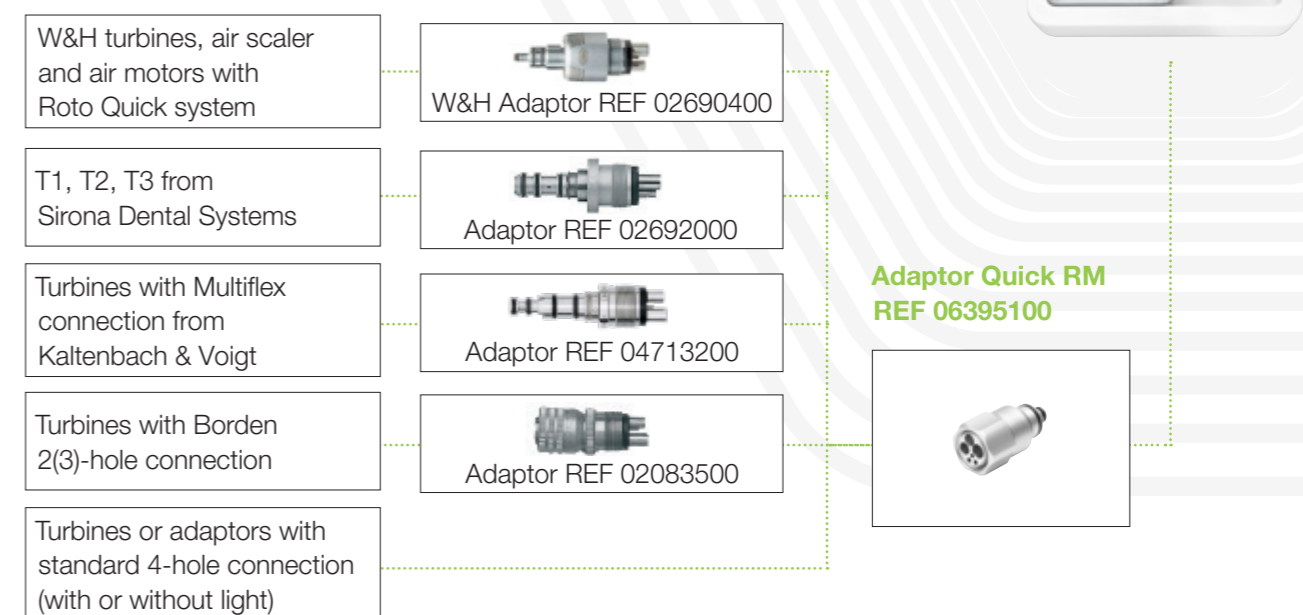
Assistina Twin (MB-302)

with Quick Connect by W&H

Straight and contra-angle handpieces

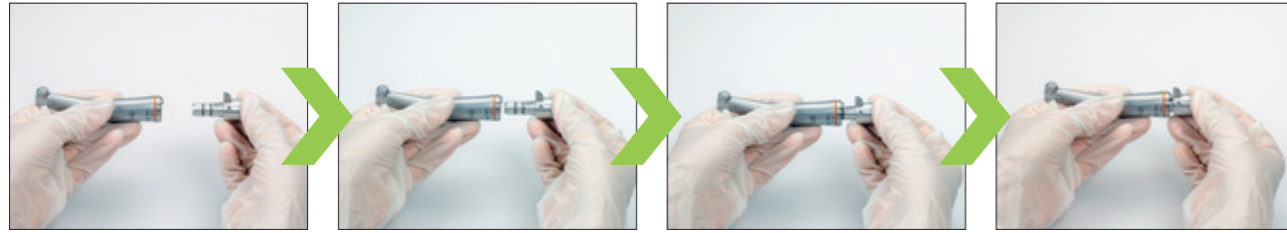


Turbines



Quick ISO adaptor for straight and contra-angle handpieces

Preparation outside and use in the Assistina Twin



- › Assemble the straight or contra-angle handpiece on the Quick ISO adaptor



- › Assemble the adaptor connection of the straight or contra-angle handpiece on the maintenance attachment in the Assistina Twin



- › Remove the adaptor connection of the straight or contra-angle handpiece from the maintenance attachment of the Assistina Twin



- › Remove the straight or contra-angle handpiece from the Quick ISO adaptor

Preparation and use in the Assistina Twin



- › Assemble the Quick ISO adaptor on the maintenance attachment in the Assistina Twin



- › Assemble the straight or contra-angle handpiece on the Quick ISO adaptor



- › Remove the straight or contra-angle handpiece from the Quick ISO adaptor



- › Remove the Quick ISO adaptor from the maintenance attachment of the Assistina Twin

Before
the maintenance process

Before
the maintenance process

After
the maintenance process

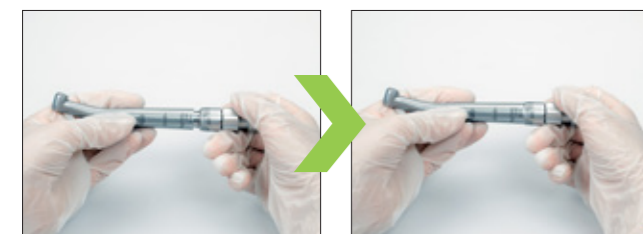
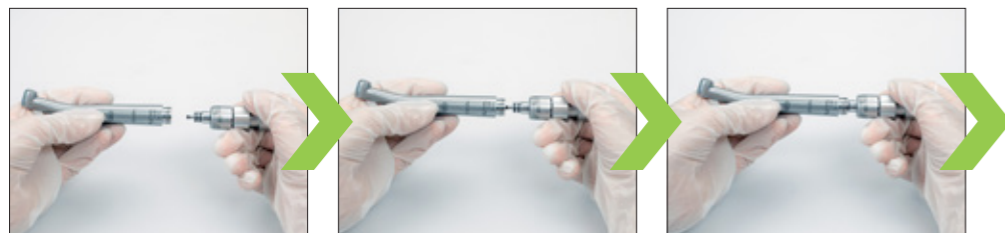
After
the maintenance process

Quick RM adaptor for turbine handpieces

Preparation outside and use in the Assistina Twin



› Screw the Quick RM adaptor to the W&H Roto Quick adaptor



› Assemble the turbine handpiece on the W&H Roto Quick adaptor



› Assemble the adaptor connection of the turbine handpiece on the maintenance attachment in the Assistina Twin

After
the maintenance process



› Remove the adaptor connection of the turbine handpiece from the maintenance attachment of the Assistina Twin



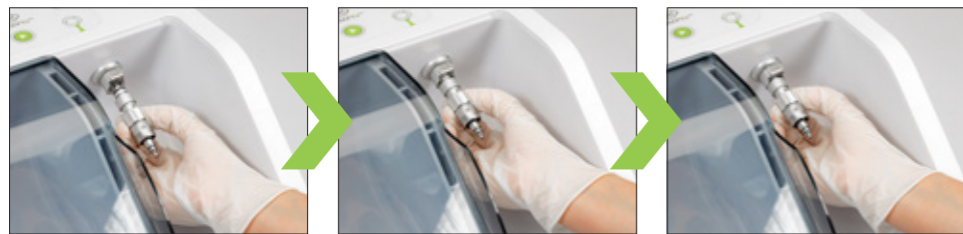
› Remove the turbine handpiece from the W&H Roto Quick adaptor

The simple assembly and removal of the respective adaptor connection enables a **fast and efficient work** – before, during and after the maintenance process.

Preparation and use in the Assistina Twin



- › Screw the Quick RM adaptor to the W&H Roto Quick adaptor



- › Assemble the adaptor connection on the maintenance attachment in the Assistina Twin



- › Assemble the turbine handpiece on the W&H Roto Quick adaptor

After
the maintenance process



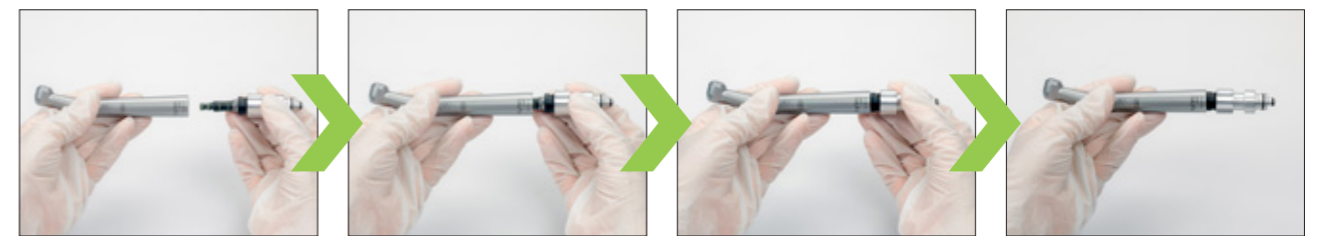
- › Remove the turbine handpiece from the W&H Roto Quick adaptor



- › Remove the adaptor connection from the maintenance attachment of the Assistina Twin

Quick RM adaptor for turbine handpieces with different connections

- › Screw the Quick RM adaptor with a Multiflex adaptor for example



- › Assemble the turbine handpiece on the Multiflex adaptor

- › Assemble the adaptor connection of the turbine handpiece onto the maintenance attachment in the Assistina Twin, start the maintenance process and after completion remove the adaptor connection of the turbine handpiece

Quick RM adaptor for turbine handpieces with fix connection

Preparation outside and use in the Assistina Twin

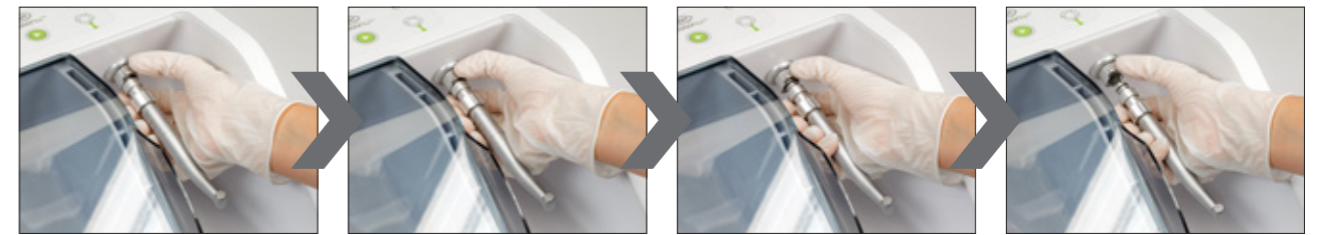


- › Screw the Quick RM adaptor to the turbine handpiece with fix connection

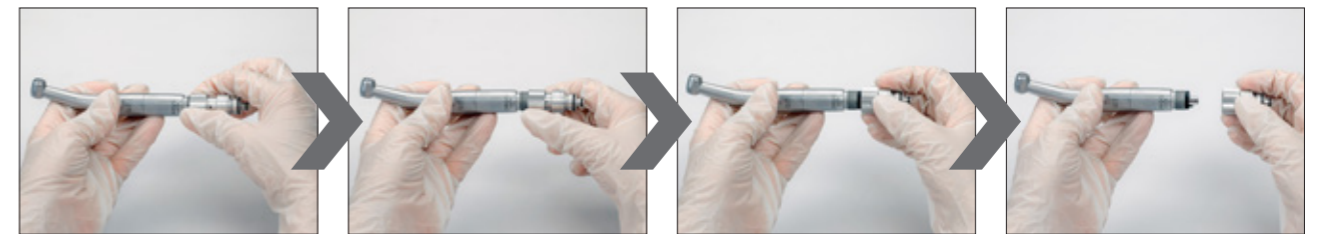


- › Assemble the adaptor connection of the turbine handpiece with fix connection on the maintenance attachment in the Assistina Twin

After
the maintenance process



- › Remove the adaptor connection of the turbine handpiece with fix connection from the maintenance attachment of the Assistina Twin



- › Unscrew the turbine handpiece with fix connection from the Quick RM adaptor



quick
connect
by W&H



Manufacturer:

W&H Dentalwerk Bürmoos GmbH
Ignaz-Glaser-Straße 53, Postfach 1
51111 Bürmoos, **Austria**
t +43 6274 6236-0
f +43 6274 6236-55
office@wh.com
wh.com

Pictures are for illustrative purposes only. Additional equipment and accessories shown are not included as standard.

20544 AEN Rev. 002 / 02.10.2024
Subject to alterations